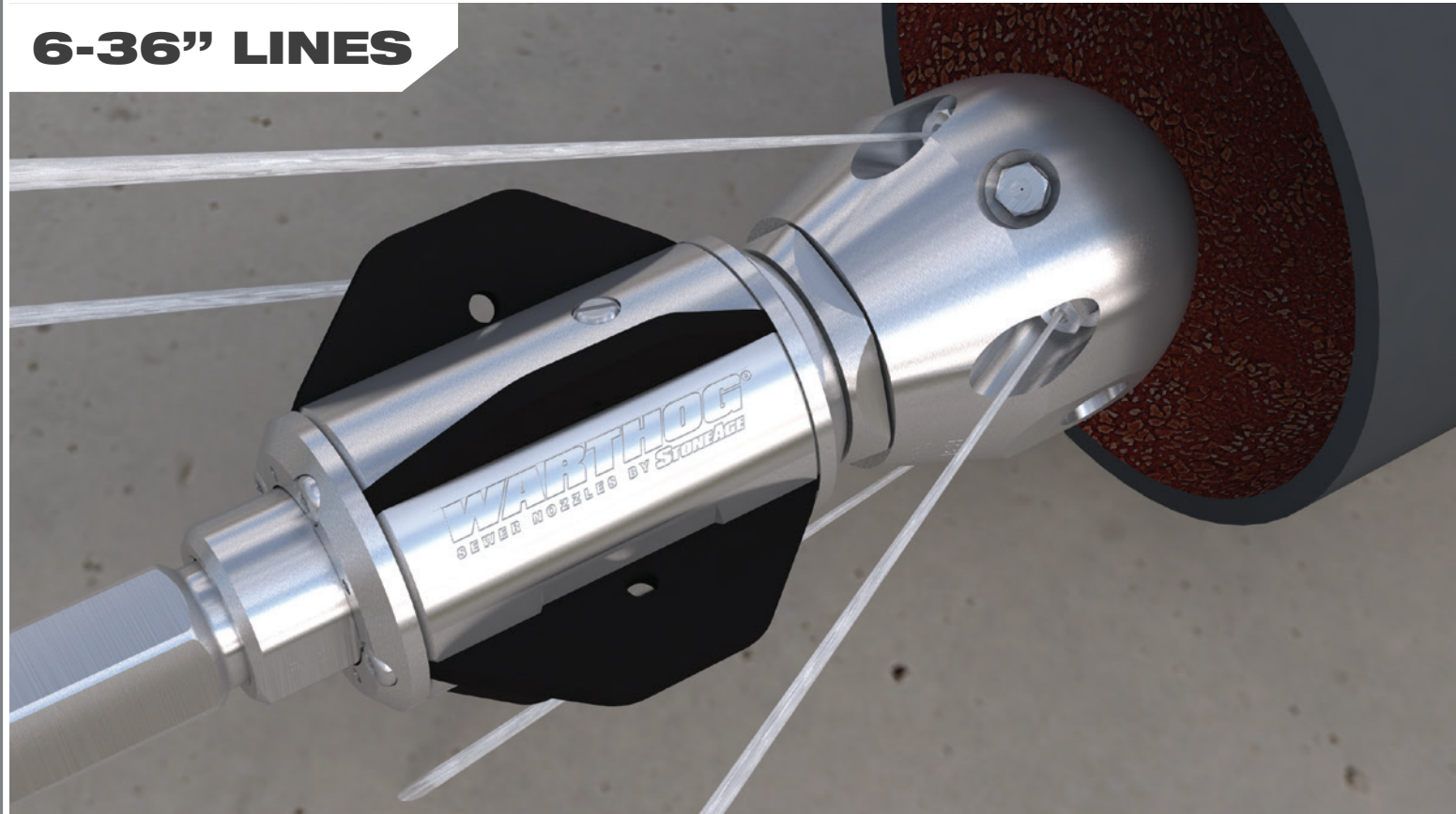


6-36" LINES



NEW!
WHR-HYBRID SWITCHER

Our latest addition to the product line, the WHR Hybrid Switcher, provides greater pulling force for use in uphill jetting applications. This is a specialized tool oriented toward users with 3000 psi/50 gpm (207 bar/190 l/min) pumps using 1" (305 mm) hose to clean 6" (1830 mm) pipes in hilly terrain.

WHR HYBRID SWITCHER	Up to 5k psi (350 bar)
	30-50 gpm Flows (115-190 l/min)
6-18" Lines (152-457 mm)	Our Latest Warthog Tool

FEATURES:

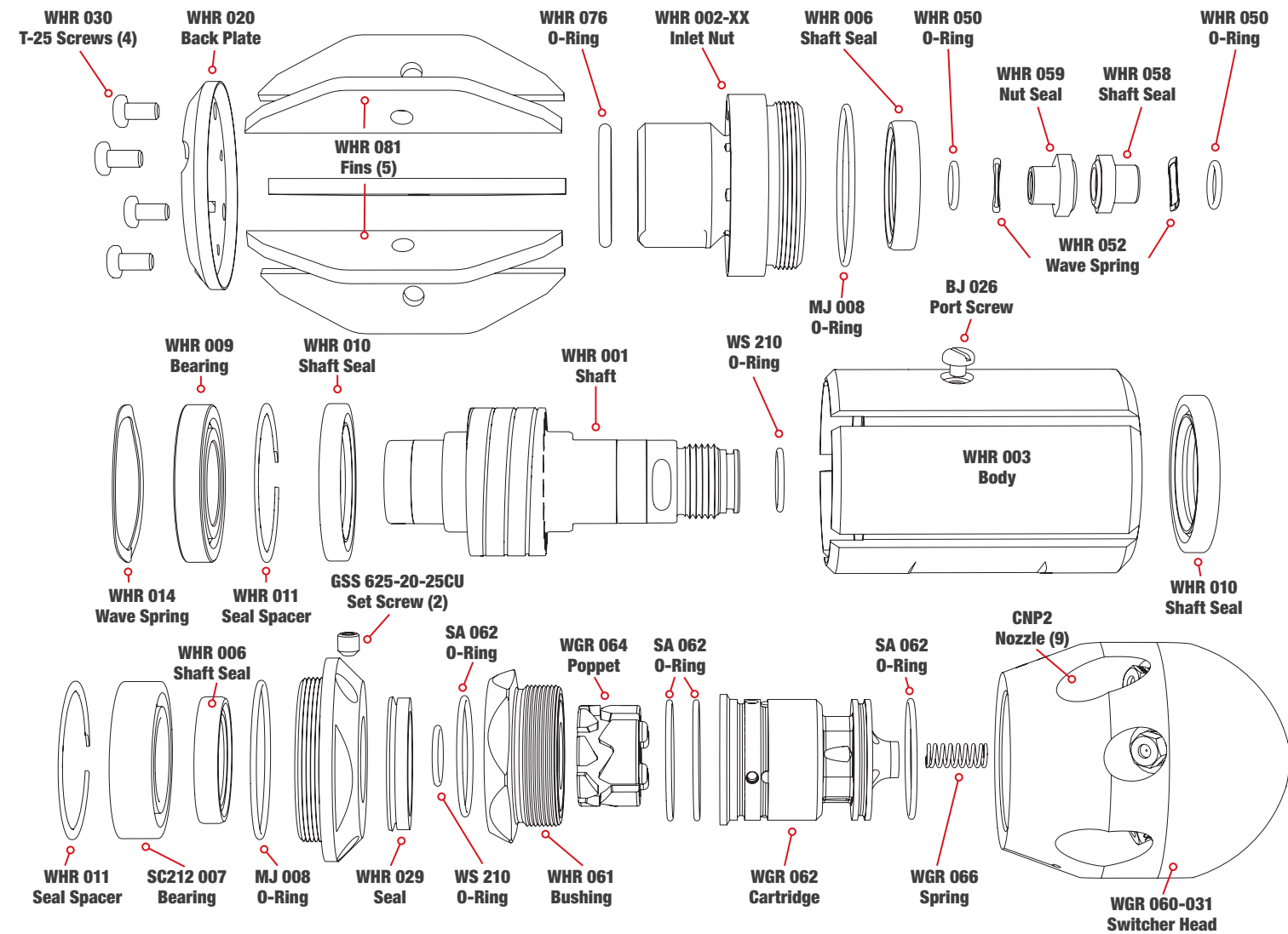
- Replaces the need for two separate nozzles
- Increases production – Removes More Debris
- Better efficiencies – Adjust water flow per operating mode
- Jet angles optimized for better cleaning and trust
- Easy Maintenance – Can be repaired anywhere with SAE Tools
- 1,200 to 5,000 (83-350 bar) operating pressures for a wide range of applications

WHR Hybrid Switcher Specifications

MAXIMUM PRESSURE	5k psi 350 bar
OPERATING PRESSURE	1200-5k psi 83-350 bar
ROTATION SPEED	150-400 rpm
FLOW	30-50 gpm 115-190 l/min
FLOW RATING	2.0 Cv
PULLING FORCE	15-90 lb 7-41 kg
INLET CONNECTION	3/4 NPT or BSPP
NOZZLE PORTS	8 x 1/8 NPT
TOOL DIAMETER INCL. CENT.	4.25 in 108 mm
LENGTH	8.8 in. 233 mm
WEIGHT	9.05 lb 4.1 kg

WHR SWITCHER

EXPLODED VIEW - PART NAMES AND NUMBERS



Maintenance & Overhaul Kits

WHR 600 • SERVICE KIT

- (1) BJ 048-M Visc Fluid, 6oz
- (1) BJ 062-S Antiseize, 2g
- (1) GP 049 Grease Syringe
- (2) GSS 625-20-25CU Set Screw
- (2) MJ 008 Nut O-Ring
- (1) SC212 007 Front Bearing
- (2) WHR 006 Outer Shaft Seal
- (1) WHR 009 Rear Bearing
- (2) WHR 010 Inner Shaft Seal
- (2) WHR 011 Seal Spacer
- (2) WHR 050 O-Ring
- (1) WHR 076 Weep Seal O-Ring
- (4) WHR 030 Torx Screws
- (1) WS 210 O-Ring

WHR 602 • HP SEAL KIT

- (1) BJ 062-S Antiseize, 2g
- (2) WHR 050 O-Ring
- (2) WHR 052 HP Wave Spring
- (1) WHR 058 HP Shaft Seal
- (1) WHR 059 HP Nut Seal
- WHR 610 • OVERHAUL KIT**
- (2) BJ 026 Port Plug
- (1) BJ 048-M Visc Fluid, 6oz
- (1) BJ 062-S Antiseize, 2g
- (1) GP 025-P2SS Hex Plug
- (1) GP 049 Grease Syringe
- (2) GSS 625-20-25CU Set Screw
- (2) MJ 008 Nut O-Ring
- (1) SC212 007 Front Bearing

- (2) WHR 006 Shaft Seal – Outer
- (1) WHR 009 Rear Bearing
- (2) WHR 010 Shaft Seal – Inner
- (2) WHR 011 Seal Spacer
- (1) WHR 014 Bearing Wave Spring
- (4) WHR 030 Torx Screws
- (2) WHR 050 O-Ring
- (2) WHR 052 HP Wave Spring
- (1) WHR 058 HP Shaft Seal
- (1) WHR 059 HP Nut Seal
- (1) WHR 076 Weep Seal O-Ring
- (1) WS 210 O-Ring
- (1) WGR 180 Torx L-Wrench

WHR 612 • TOOL KIT

- (1) BA 481 Bearing Removal Tool
- (1) WGR 180 Torx L-Wrench
- (1) WHR 181 Removal Press Tube
- (1) WHR 182 Install Press Tube
- (1) WHR 183 Hex Tool
- (1) WHR 184 HP Seal Install Tool
- (1) WGR 186 HP Seal Puller
- (1) WHR 187 HP Seal Puller Pin